


# IQVIA PharMetrics® Plus for Academics

*Real-world data on commercially insured patients, enhanced with the most complete source of data on the market*

## Today's reality

When it comes to understanding disease and treatment patterns, academic researchers are challenged to find insights that shed light on burden of disease, which therapies can extend life and for how long, and associated patient costs. Today, academics need a comprehensive resource of information, with visibility into diagnoses, treatments, and related costs to support their critical research.

 **Understanding disease and treatment patterns**

 **Advancing real world patient-level clinical evidence**

 **Providing context for healthcare costs**

 **Assessing policy levers**

## The right solution — IQVIA PharMetrics Plus for Academics

IQVIA PharMetrics Plus for Academics is a longitudinal health plan database of fully adjudicated integrated medical and pharmacy claims offered specifically for academic research. It includes patient enrollment data from national, regional, and self-insured employer group health plans. Delivery tools and expanded possibilities with data linkage are also available. PharMetrics Plus for Academics is uniquely positioned to support academic researchers with a wide range of study types, including:

- Patient characterization
- Incidence and prevalence
- Patient journey
- Comparative effectiveness

---

### Comprehensive insights to inform a wide range of academic questions



- Patient journey
- Patient characteristics
- Incidence and prevalence
- Comorbidities
- Medication use

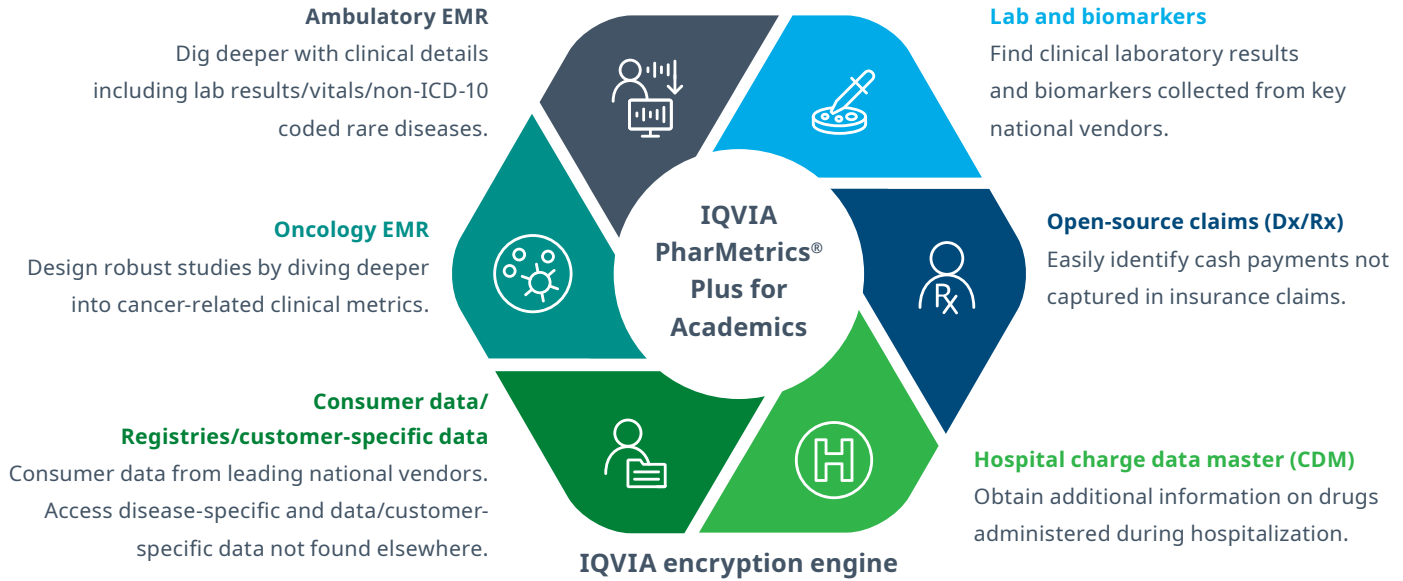


- Treatment patterns
- Adherence and persistence
- Time-to-treatment
- Lines of therapy
- Healthcare outcomes



- Burden of disease
- Healthcare costs
- Resource utilization — (outpatient, inpatient, and pharmacy)
- Safety and adverse outcomes

## Link PharMetrics Plus to other data for the unique ability to uncover deeper, more specific insights



## Enhancing with attributes can drive comprehensive patient insights

- ZIP3** (Blue): Leverage patient ZIP3 to deepen insights into geographic variability. Icon: Globe.
- Linkable patient ID** (Dark Blue): Leverage IQVIA's encrypted de-identified patient ID to link to additional data assets for enhanced capabilities. Icon: Link chain.
- Clinical metrics** (Green): Leverage up to 66 lab test results as à la carte additions to further evaluate patient health and outcomes. Icon: Test tubes.
- Enhanced data attributes** (Teal): Access additional data attributes:
  - Lab test results
  - Mortality
  - Race/ethnicity
  - Data linkingIcon: Hospital building.



## About IQVIA Connected Intelligence™

Connected Intelligence brings together IQVIA's unique portfolio of capabilities to create intelligent connections across its unparalleled healthcare data, advanced analytics, innovative technologies, and healthcare expertise to speed the development and commercialization of innovative medicines that improve patients' lives.

Discover new insights, drive smarter decisions, and unleash new opportunities with the power of [IQVIA Connected Intelligence](#).