

2024 Overview (until end of September)

IQVIA Health Data Catalog

The go-to global source to rapidly identify the most relevant Real World Data sources

Welcome to the IHDC Infographics!

IHDC makes assessing real world data fast and easy with 3,900+ unique data assets across 100+ countries described by up to 250+ variables. IHDC is accessible upon subscription, either in SaaS Syndicated mode (IQVIA interface & IQVIA content) or in SaaS proprietary mode (IQVIA interface + IQVIA content + client proprietary/confidential content)

The IQVIA Health data catalog evolution in 2024

Via the proactive management of the community of data sets owners and experts — in and outside of IQVIA — IHDC is undergoing relentless evolution resulting in the following main changes in 2024



The # of referenced data sets, has increased by **500+** (net gain with new added assets and some archived obsolete ones) from the beginning of 2024, reaching 3,900+ in October

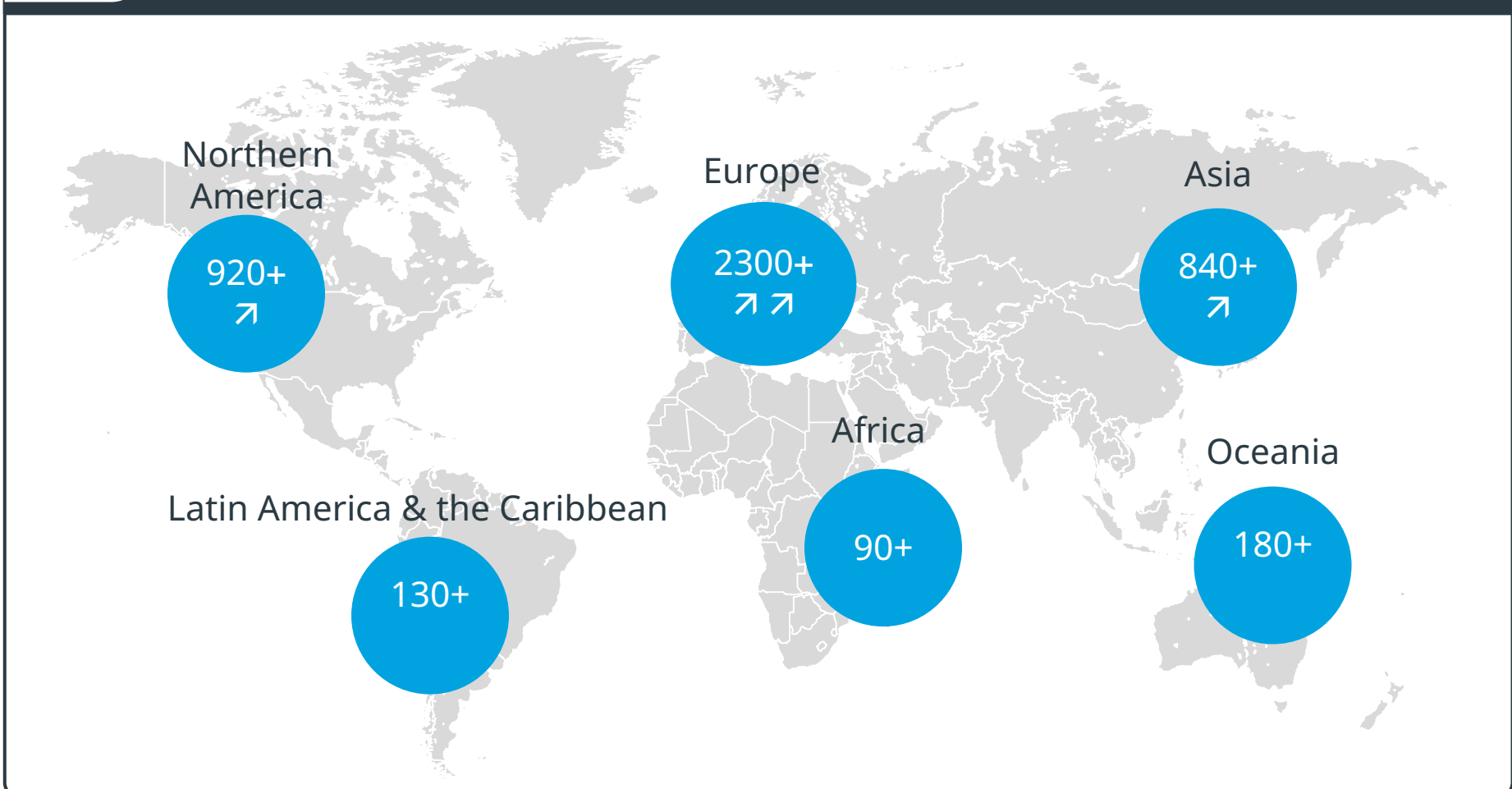


The # of datasets referenced in Europe has showed the highest increase (280+ additional assets)



The # of listed sources also increased Asia (140+ new assets) and in Northern America (119+)

Data assets per main geographic area



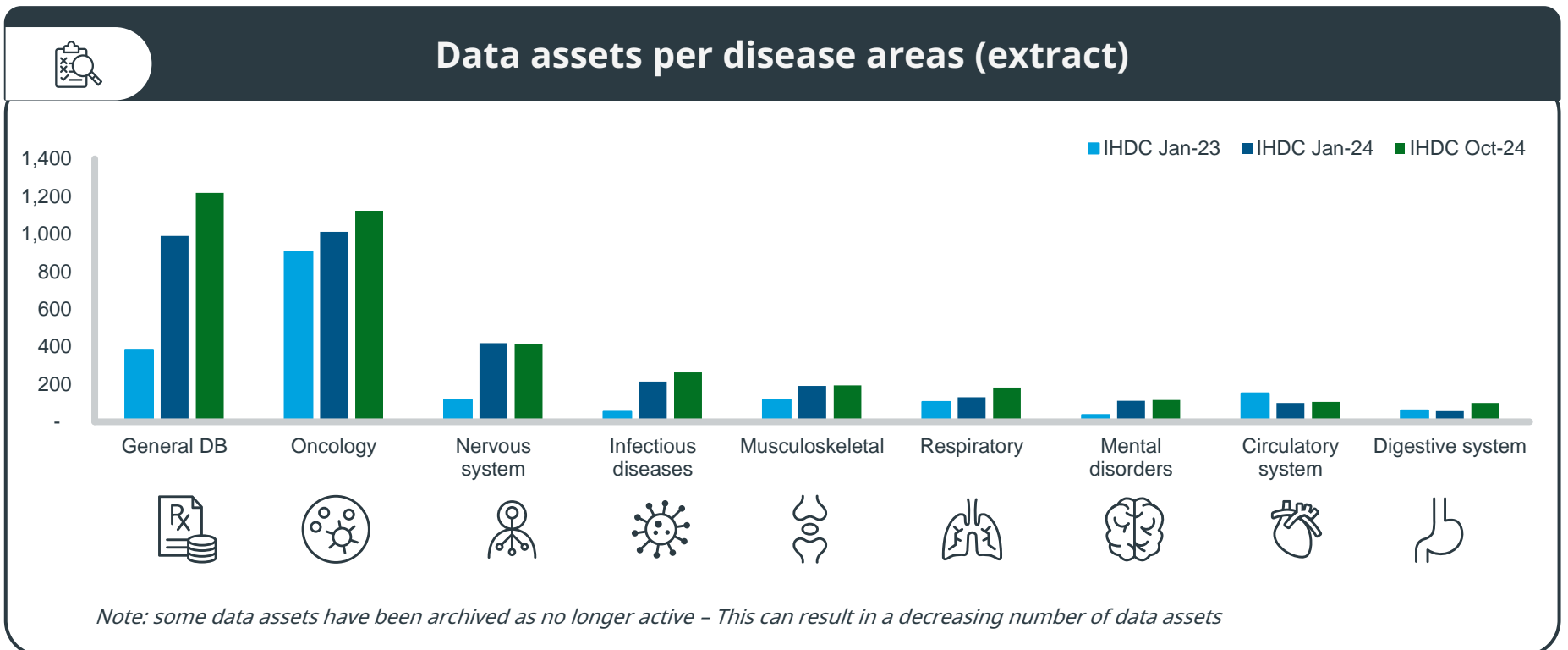
Most of the data sources referenced in IHDC are disease specific. Oncology is the most frequent therapeutic area covered.



The number of "Pulmonary disease datasets" also shows continuous increase with more than 50 new references added over the last 3 months.



Among other disease areas, the number of data sources remained quite stable over the last quarter.



The **fill-in rate** on the landing page of the catalog is set as an indicator providing transparency and managing expectations on the available level of information on listed assets. The % represents the number of items documented out of expected items to be documented

The ongoing orchestrated efforts of **170+ teams** of data holders and SMEs resulted in an **increased depth of data sets' profiling**: In addition to the 500+ added assets, **930+ data assets profiles have been updated** since beginning of 2024, resulting in **increased fill-in rates** (+13 points on average, up to 90+ points)

These efforts to deepen IHDC content result in a continuous and faster increase in the number of data assets showcasing a significant level of depth (fill-in rate >26%, corresponding to more than 35 variables documented)

Fill-in rate range	Jan 2023 2,172 assets	Jan 2024 3,469 assets	Oct 2024 3,987 assets
<15% or <20 variables	1,985	1,644 ↘	1,414 ↘
15% - 25% or 20 - 34 variables	37	1,399 ↗	1,840 ↗
26% - 50% or 35 - 68 variables	14	268 ↗	561 ↗
>51% or >69 variables	136	158 ↗	175 ↗

The efforts to broaden and deepen the content of the catalog are facilitated by some developments – transparent for the users –significantly contributing to an improved quality of the content. The “import program” for example, already facilitating the harmonization of IHDC information across data assets coming from different sources, has been improved to facilitate and harmonize updates

IQVIA Health data catalog: What's next?

With several changes already scheduled, 2024 is expected to confirm the development dynamism of IHDC in terms of content **breadth and depth** with added emphasis on terminology harmonization and data sets quality metrics. A lot has already happened since the beginning of the year!

Quality and relevance of the content

- Currently focusing on patient data, IHDC will progressively include **other types of health data** (health care professional data, sales data, unstructured data, etc.)
- A significant effort is dedicated to improve the **classification of datasets by disease area**, which will result in a **more efficient search**
- New chapters are progressively made available to further deepen the description of data sets:
 - Disease area deep dives** providing (upon subscription) detailed focused information on how data assets cover selected conditions – 10+ deep dives are **already available**, many more to come over 2024
 - A data quality** framework, further expanding existing variables such as coverage, freshness, will be added to facilitate the evaluation of fitness for purpose of data assets for specific research projects

User experience improvement

- “**Save search**” feature allowing to save search criteria (instead of re-entering them systematically) is **now available** making it fast to refresh results as needed. Soon an “alert” feature will make sure to send notifications when new data assets corresponding to your saved search will be added in the catalog
- “**Save export template**” has been **recently deployed**
- In Q4 a new user interface** will be released, to facilitate search and navigation across IHDC chapters
- Over 2024**, new user profiles are deployed to ensure maximum flexibility to correspond to client or partner objectives and resources